

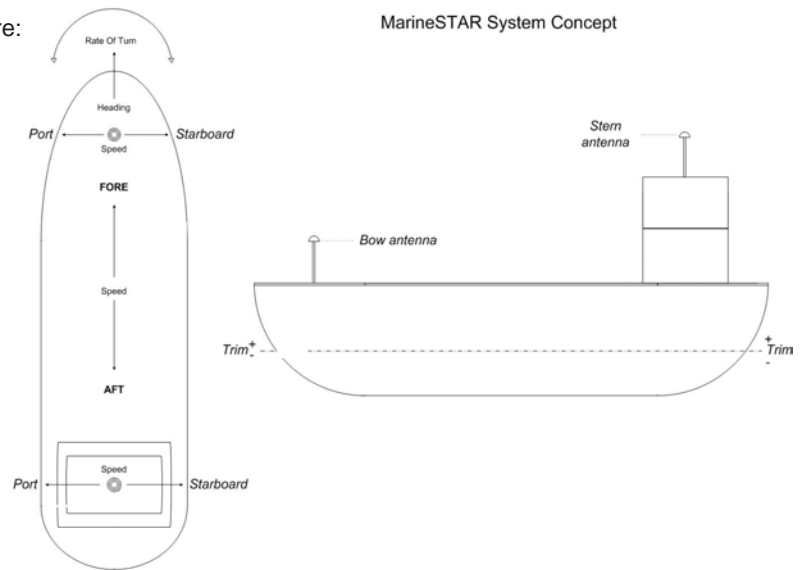
MarineSTAR MS - Outline Description

System Layout

The Fugro MarineSTAR MS (manoeuvring system) utilises differential satellite navigation technology to provide high accuracy position, course and speed information. Two self contained navigation systems are installed – one forward and one aft in the vessel, permitting not just position but full ship vector data to be obtained.

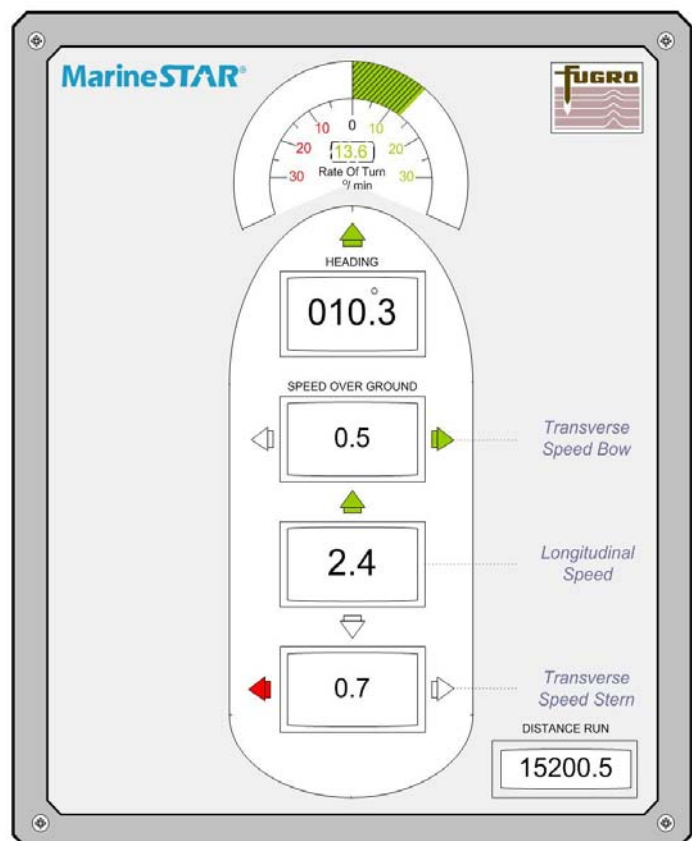
Key system measurements are:

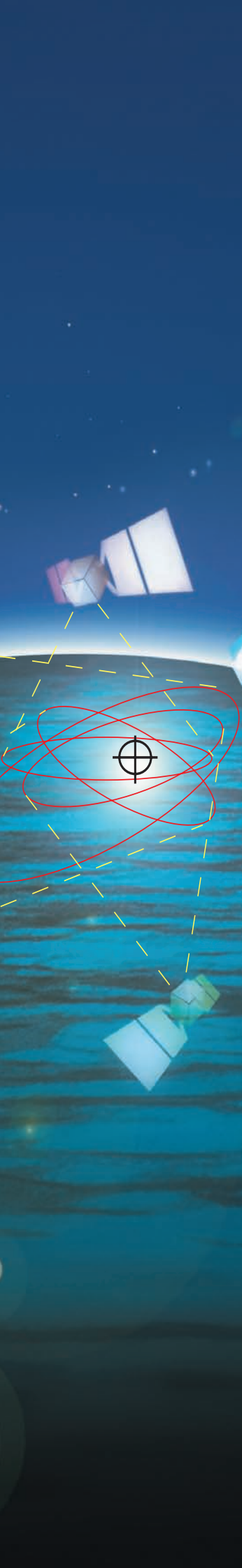
- Heading
- Rate of Turn
- Speed Over the Ground, fore and aft
- Speed Over the Ground, athwartships at bow
- Speed Over the Ground, athwartships at stern



High Visibility Displays

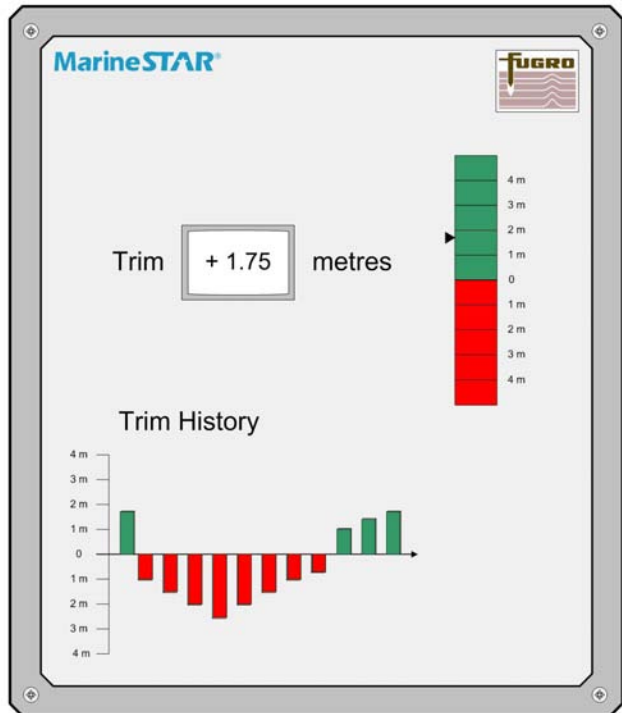
High visibility conning and bridge wing displays provide ships' navigators with essential manoeuvring information in a user friendly graphical format.





Fuel Optimisation

Ship position and movement is measured not just in the horizontal plane but also vertically – true 3D navigation! This enables measurement and display of fore and aft trim – a powerful tool in bunker fuel optimisation.

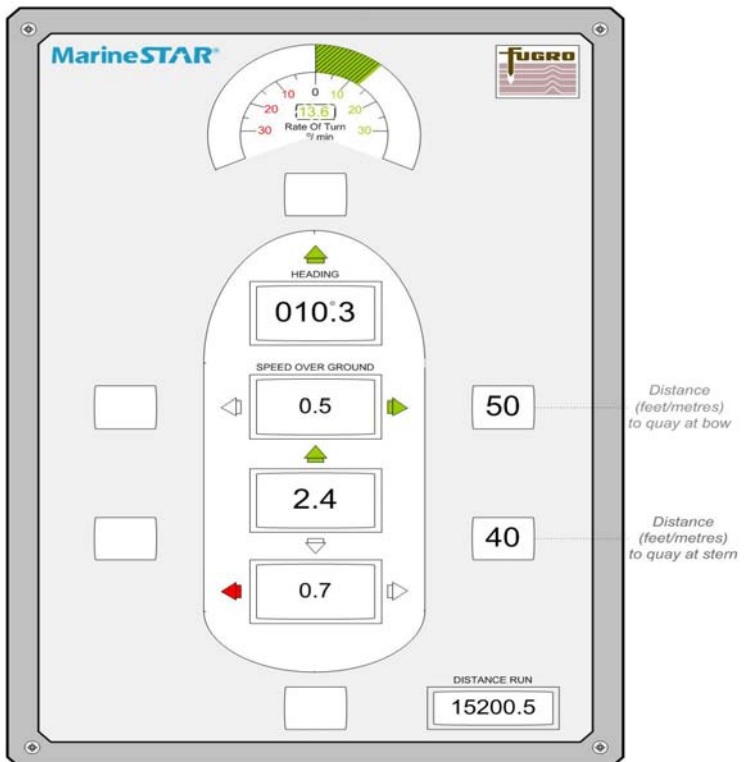


Berthing Display

The MS 2 version of the system also includes quay distance indications for assistance in berthing.

Bridge System Integration

Position, course and speed outputs are provided for use by other bridge systems such as ECDIS.



Further information

Complete technical information on a specific model type or peripheral hardware can be obtained from Fugro Seastar AS:



Fugro Seastar AS

Hoffsveien 1C
P.O.Box 490, Skøyen
N-0213 Oslo, Norway
Phone: +47 21 50 14 00
Fax: +47 21 50 14 01
Email: seastar@fugro.no
Web: www.fugroseastar.no